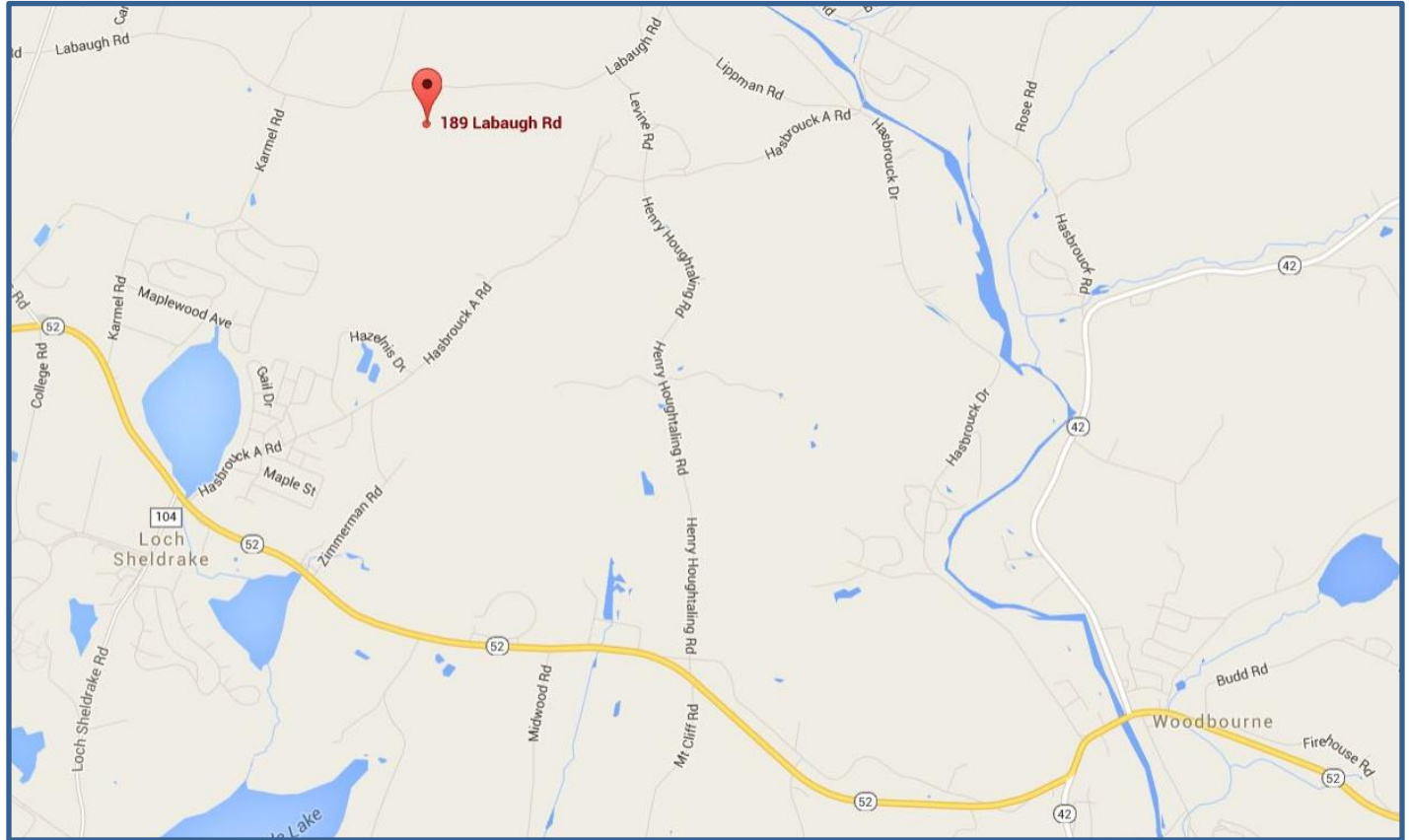




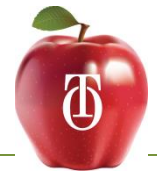
For Information Please Email To
info@theorchardsny.com



The Orchards



The Orchards



FEW THINGS IN LIFE ARE AS IMPORTANT AS YOUR HOME It's where you raise your children, enjoy the company of your grandchildren, spend time with treasured ones and take in life's most precious moments. Today, you have the opportunity to make your home in "The Orchards", a bucolic development located along a country (LaBaugh) road in Hurleyville, New York.

Your New Neighborhood

Introducing;

"The Orchards" is a development positioned on more than 60 picturesque acres on a serene country road in Hurleyville, New York, a hamlet of the town of Fallsburg. Just far enough from the city to provide all the comforts of country living, but close enough to keep you connected to shopping, restaurants, year round Shiurim and other attractions.

The project has been approved for a total of 83 beautiful detached homes. These homes will offer all the amenities of a summer retreat as well as the added benefit of being fully winterized for a weekend getaway during the year. The projected completion of the project is set for September 2017.



Location

Its location, just off of Labaugh Road, (2.2 miles from the town of Loch Sheldrake) puts you just down the lane (4.5 miles) from the main retail artery of Woodbourne, and just a short drive (6.8 miles) from the celebrated town of South Fallsburg, renowned around the world, as the place to be, during the summer months. You'll love shopping at the large supermarkets, quaint restaurants, chocolate/ice cream shops, and pizza parlors in Woodbourne. It's also just 6 miles down the road from Four-Corners, which provides ample opportunities to enjoy the warm summer days, while being just 13 miles from exit 107 on route 17.



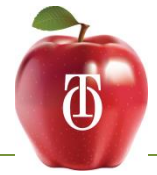
The Site

- All homes will be built to maximize privacy, front entrances will face different angles.
- Interior paved walkways, with proper lighting. (75 Ft. Apart)
- Blacktop path from parking area to unit.
- Paved driving road behind the units.
- 2 Parking spaces at each unit, plus additional designated parking areas.
- Chain link fence between houses with a door to parking area.

The Shul/Community Center/Day Camp House

The Shul, a beautifully designed community center that boasts more than 4,000 square feet in which you can learn, daven, make שמחות in, entertain and enjoy time with your neighbors. Plan a party, get together to hear a speech, or simply share a meal with friends and family using The Shul's full kitchen. The lower level will be set up for classrooms and day camp facilities. It will be there, for your רוחניות as well as for your גשמיות enjoyment.

- Spacious 5,000+/- square foot building per floor. (Central AC & Heat, Separate Men's and Ladies tiled bathrooms.)
- Tiled kitchen area.
- The lower level will house classrooms, and day camp facility.



Activity Facilities

- Basketball Court – Blacktop Finish
- Paddleball Court – Blacktop Finish
- Baseball Field
- Tennis Court/Volley Ball Court
- 4 Playgrounds (one in center of each circle)
- 2 Large Heated Pools (30' X 65' = 1,950 S.F. each) with changing rooms housing both Bathroom and Showers.
- 1 Kiddies Pool in Women's Pool Area
- Night Time Lighting Around The Pool And Courts
- Beautiful Landscaping
- Gazebo Sitting Areas

The Orchards



Your home in “The Orchards” will be built with only the finest materials and craftsman-like precision, by a renowned Company. You'll find a comfortable floor plan that's perfect for both daily living and weekend getaways with the family.

You'll be able to easily make your way to The Shul at the “The Orchards”, which features well-lit paved walkways or through paved roadways that lead you directly to your home. And you won't have to worry about vehicular traffic getting in your way, as all walking areas are located within a gated common area.

If you're interested in getting active, you'll find plenty of options in “The Orchards”. For those who love participating in sports, there's a basketball court, paddleball court, and options for a baseball field, tennis court, and a volleyball court. You'll also have access to two large, (night lights) heated pools and a kiddie pool surrounded by beautiful changing rooms that are well-lit and incredibly comfortable. Speaking of kids, they'll love the four playgrounds, (one in each circle) which are equipped with everything kids love--from swings to slides and more....

The neighborhood is environmentally friendly, with landscaping that is as beautiful as it is functional, featuring its very own sewer treatment plant and its own wells. It also includes an impressively engineered storm water catch basin system that ensures the entire community will always be clear of flooding and associated issues.



Your New Home in “The Orchards”

Each home in “The Orchards” is built indoors, in a temperature controlled environment, using the most modern technology. Homes are spacious, with anywhere between 1,350+ and 1,700+ square feet of living space. They've been designed with experienced space consultants to ascertain maximum usage of space.

Your completely detached home will be built on a spacious lot that gives you at least 25 feet of distance from your neighbors. Your home will also have a deck, where you can barbecue, chat with your neighbors, enjoy the long summer days or simply watch your grass grow.

Inside (deluxe and premium), you'll enjoy 8'6"-inch ceilings, cable/internet-ready homes, plenty of closet space, a laundry room, central air, and plush carpet throughout the living spaces (additional flooring options available). You'll also be able to make good use of a full kitchen with an island and plenty of cabinet space, making it the perfect place to entertain. Or you can enjoy your time with friends and family in your spacious new dining or living room.

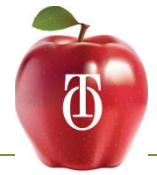
Included as well is a basement ranging in size from 1,386 to 1,786 square feet. You can finish your basement or use it as utility space, where you can store your kids' athletic gear, your golf clubs and other creature comforts that you don't always want displayed.

The Orchards



- Completely detached units.
- Full unfinished basement with 8' ceiling, plumbing prepared for 1 bathroom, windows on all sides.
- Approximately 2,700 sq. ft. – 3,572 sq. ft. per unit, including basement.
- 8'0" ceiling, optional 8'0" with cathedral ceiling or 9' throughout (Deluxe & Premium).
- Drywall throughout.
- Casing around all doors, cove moldings, base moldings.
- Phone jack, cable ready.
- 2 full bathrooms for the smaller unit, and optional 3rd bathroom for the biggest unit.
- Closets in bedrooms with wire ventilated shelves and rods.
- Approximately 215 sq. ft. deck with a wrap around for side entrance, sliding glass door to deck.
- Central heat & air.
- 50 gal hot water heater.
- Luxury plush carpeting in all living areas.
- Vinyl look in kitchen, entrance and bathroom floors.
- Laundry room. (In 1786 Sq. Ft. Unit)
- Wood kitchen cabinets, 4" backsplash, deep aluminum sinks with custom faucet package.
- Water and gas connections for garden hose and barbecue grill.
- 25 ft. minimum separation between homes.
- 2 cars parking behind each unit paved.
- Walkway lights near each unit.

The Orchards



In addition to the amenities listed above, you'll also receive lawn care, pool care, trash removal service, insurance for common areas, snow plowing, water/sewer operator, Shul and grounds maintenance for the low cost of approximately \$3,900 per year.

Why wait? Start creating the perfect home or weekend getaway for your family in "The Orchards" today!!.

****PLEASE NOTE: FEATURES, PRICES AND AMENITIES MENTIONED MAY BE SUBJECT TO CHANGE.**

******* The Condominium offering plan is being prepared for submittal to the attorney general's office by Jay Zeiger, Esquire. And should be approved by August 2017.

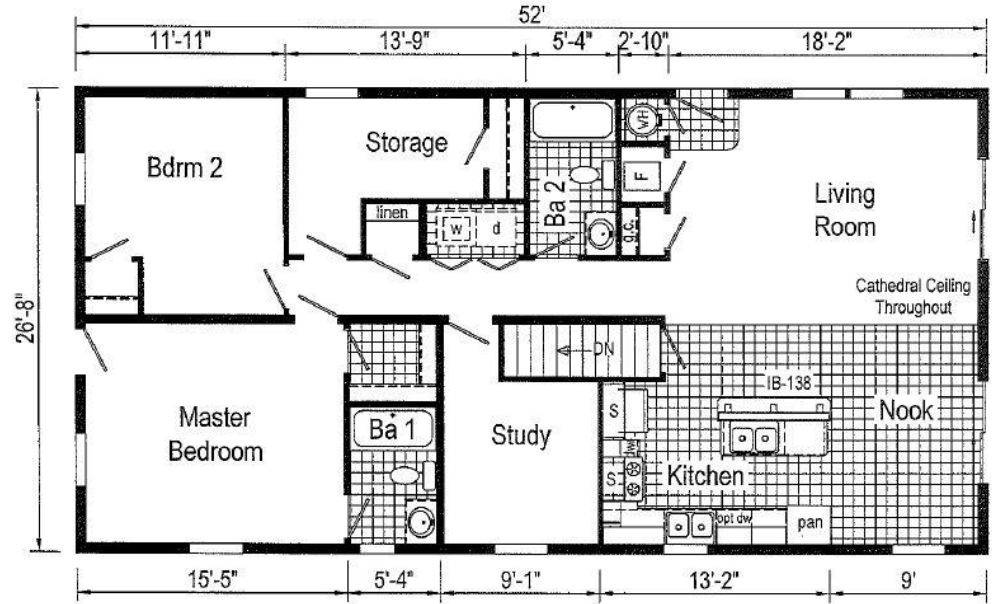
The Orchards



1386 sq. ft. total area

Width 26'8"

Length 52'



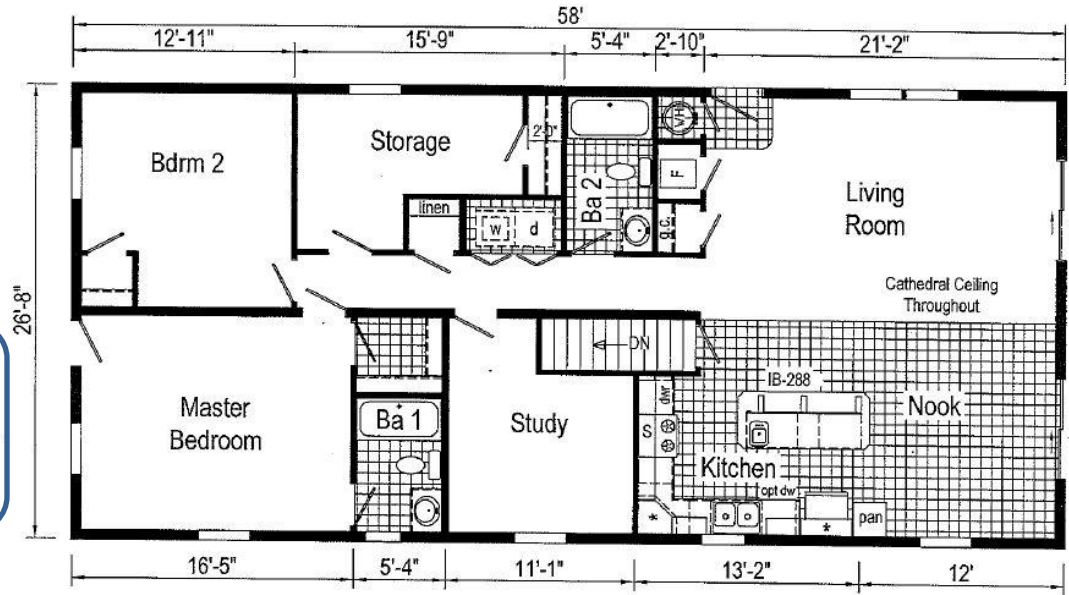
The Orchards



1546 sq. ft. total area

Width 26'8"

Length 58'



The Orchards



Exterior

- 8'0" Ceiling Height
- Main Entrance Door - 36" 6 Panel Fiberglass W/Deadbolt
- Other Exterior Door - 32" 6 Panel Fiberglass Door W/Deadbolt
- One Sliding Vinyl Patio Door W/Grids
- Low-E Thermopane Single Hung Windows With Grids
- Shutters On Side Of Windows
- GAS For BBQ Grill
- Exterior Frost Free Valve
- Pressure Treated Wood Deck 215 Sq. Ft.
- Wire And Switch Prepared For Exterior Lighting

Living Room And Hall

- 2 Bulb Brush Satin Nickle Light Fixture

Dining Room

- 2 Bulb Brush Satin Nickle Light Fixture

Kitchen

- 30" Overhead Cabinets - Georgetown Oak Mission Flat Panel
- Laminate Countertops (Choices of 12 Styles) With 4 Inch Backsplash Laminate And Crescent Edge
- 2 Separate Stainless Steel Sinks With Brushed Satin Nickel Faucet W/Sprayer
- Kitchen Overhead Cabinets Bottom Trim W/Cabinet Crown
- 6 Recessed Spot Lights
- 2 Bulb Brush Satin Nickle Light Fixture Above Island
- Range Hood - Black Or White
- Wire For Customer Installed Microwave/Hood Combo
- Wire For Uninstalled Dishwasher
- 100 CFM Power Vent Fan Above Island Cooktop Area
- Plumb For Gas Cooktop At Island W/110V Recept
- Plumb For Icemaker

Bathrooms

- 2 Full Bathrooms
- Wood Vanity Cabinets - Georgetown Oak Mission Flat Panel
- Laminate Countertops (Choices of 12 Styles) With 4 Inch Laminate Backsplash And Crescent Edge
- Congoleum LuxFlor Linoleum Flooring - Choice of 6 Styles
- Recessed Medicine Chest With Mirror
- 3 Lights Strip Above Medicine Chest Bath 2
- Power Bath Vent With Light/Separate Switched
- Cubby Over Stool Bath 1 - Georgetown Oak Mission Flat Panel

Bedrooms

- Carpet Pad 5 LB. With 25 Oz. Carpet - Choice of 6 Styles
- 2 Bulb Brush Satin Nickle Light Fixture

Trimnings, Flooring, Finishes, Misc.

- White 2-Panel Door - Hollow Core
- Door/Window MDF Painted White Casing 2 1/4"
- Congoleum LuxFlor Linoleum Flooring - Choice of 6 Styles - Kitchen, Living Room, Dining Room And Hall
- Base Molding MDF Painted White 3 1/4"
- Finished White Painted Drywall
- 50 Gal Electric Water Heater W/Drip Pan
- 2 - Cat 5/RJ45 Phone Jacks
- 200 Amp Service Entrance
- 72M BTU Auto Ignition Gas Furnace – Quiet Operation
- 4 Ton Heating And Cooling Unit
- Programmable 5/1/1 day heat/cool Thermostat
- AC/DC Smoke Detector
- Combo Co/Smoke Detector
- Exterior GFCI
- Wire Ventilated Overhead Shelf In Each Closet

The Orchards



Includes all The Standard Features With These Added Features

Exterior/Structure

- 8'0" Ceiling Height with 5/12 Cathedral Ceiling Or 9' Flat Ceiling Height
- Double Vinyl Patio Door W/Grids, Vert Blind, Valance
- Low-E Thermopane Double Hung Windows with Grids
- Trapezoid Windows above Patio Doors at the 8'0"/Cathedral Ceiling And Transoms Above Doors at the 9' Flat Ceiling
- Transom above Living/Dining Room Windows

Dining Room

- 5 Arm Chandelier

Kitchen

- 42" Overhead Cabinets W/2 Adjustable Shelves - Choice of Georgetown Oak Mission Flat Panel/Georgetown Oak Raised Panel/Vermont Maple Mission Flat Panel/Driftwood Mission Flat Panel/Hickory Raised Panel/White MDF Flat Panel

Bathrooms

- Traditional Style Upgraded Deluxe Wood Vanity Cabinets - Choice of Georgetown Oak Mission Flat Panel/Georgetown Oak Raised Panel/Vermont Maple Mission Flat Panel/Driftwood Mission Flat Panel/Hickory Raised Panel/White MDF Flat Panel
- 3 Lights Strip Above Medicine Chest In All Bathrooms

Trimnings, Finishes, Misc.

- Prepared Gas Line For Fire Place
- TV Jack

The Orchards



Includes all The Standard/Deluxe Features With These Added Features

Exterior/Structure

- Main Entrance Door - 9 Panel W/Lite Fiberglass W/Deadbolt

Living Room and Hall

- 6 LED Spot Lights

Dining Room

- 2 LED Spot Lights

Kitchen

- Granite Or Quartz Countertops W/Full Tiled Backsplash – Available Choices For Granite/Quartz/Tiles
- 2 Gooseneck Pull Out Kitchen Faucet W/Sprayer
- Six 6" LED Lights
- Range Hood - Stainless Steel
- 9" Xenon under Cabinet Lights

Bathrooms

- Granite Or Quartz Countertops – Available Choices For Granite/Quartz
- Wide Spread Faucets
- Laminate Flooring – 16 Choices Available or Tiled Flooring – Available Choices
- 4' Tiled Wall – Available Choices

Trimmings, Flooring, Finishes, Misc.

- White 2-Panel Door - Solid Core
- Laminate Flooring - 16 Choices Available - Ebony Oak/Golden Oak/ Royal Slate/Maple Cappuccino/Fuzzy Grey/Golden Walnut/Tiffany/River Rock/Cascada/Urban Safari/Winter Wood/Marquee/Timberwolf/Acacia/Deep Forest/Storm Grey
- Deluxe Door/Window Casing MDF Painted White 3 1/4"
- Deluxe Base Molding MDF Painted White 5 1/4"
- Deluxe Cove Molding MDF Painted White 3 5/8"

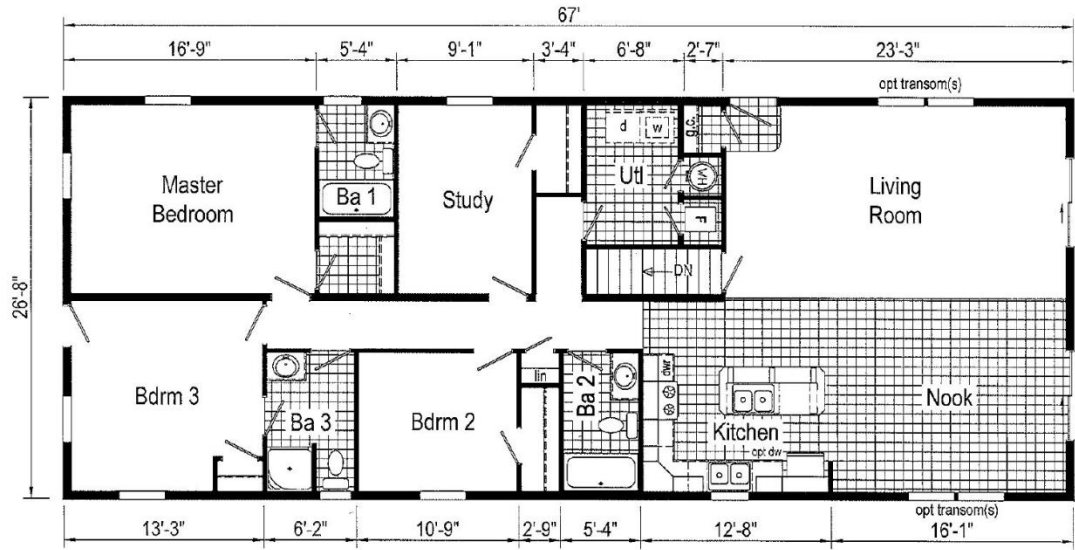
The Orchards



1786 sq. ft. total area

Width 26'8"

Length 67'



The Orchards



Exterior/Structure

- 8'0" Ceiling Height
- Main Entrance Door - 36" 6 Panel Fiberglass W/Deadbolt
- Rear Exterior Door - 32" 6 Panel Fiberglass W/Deadbolt
- One Vinyl Patio Door W/Grids
- Low-E Thermopane Single Hung Windows with Grids
- Shutters on Side Of Windows
- GAS for BBQ Grill
- Exterior Frost Free Valve
- Pressure Treated Wood Deck 215 Sq. Ft.
- Wire and Switch Prepared For Exterior Lighting

Living Room and Hall

- 2 Bulb Brush Satin Nickle Light Fixture

Dining Room

- 2 Bulb Brush Satin Nickle Light Fixture

Kitchen

- 30" Overhead Cabinets - Georgetown Oak Mission Flat Panel
- Laminate Countertops (Choices of 12 Styles) With 4 Inch Backsplash Laminate And Crescent Edge
- 2 Separate Stainless Steel Sinks With Brushed Satin Nickel Faucet W/Sprayer
- Kitchen Overhead Cabinets Bottom Trim W/Cabinet Crown
- 6 Recessed Spot Lights
- 2 Bulb Brush Satin Nickle Light Fixture above Island
- Range Hood - Black or White
- Wire for Customer Installed Microwave/Hood Combo
- Wire for Uninstalled Dishwasher
- 100 CFM Power Vent Fan above Island Cooktop Area
- Plumb for Gas Cooktop At Island W/110V Recept In Island For Cooktop
- Plumb for Icemaker

Bathrooms

- 2 Full Bathrooms
- Wood Vanity Cabinets - Georgetown Oak Mission Flat Panel
- Laminate Countertops (Choices of 12 Styles) With 4 Inch Laminate Backsplash And Crescent Edge
- Congoleum LuxFlor Linoleum Flooring - Choice of 6 Styles
- Recessed Medicine Chest With Mirror
- 3 Lights Strip above Medicine Chest Bath 2
- Power Bath Vent With Light/Separate Switched
- Cubby Over Stool Bath 1 - Georgetown Oak Mission Flat Panel

Bedrooms

- Carpet Pad 5 LB. With 25 Oz. Carpet - Choice of 6 Styles
- 2 Bulb Brush Satin Nickle Light Fixture

Laundry Room

- Wire Ventilated Overhead Shelf

Trimmings, Flooring, Finishes, Misc.

- White 2-Panel Door - Hollow Core
- Door/Window MDF Painted White Casing 2 1/4"
- Congoleum LuxFlor Linoleum Flooring - Choice of 6 Styles - Kitchen, Living Room, Dining Room And Hall
- Base Molding MDF Painted White 3 1/4"
- Finished White Painted Drywall
- 50 Gal Electric Water Heater W/Drip Pan
- 2 - Cat 5/RJ45 Phone Jacks
- 200 Amp Service Entrance
- 72M BTU Auto Ignition Gas Furnace – Quiet Operation
- 5 Ton Heating and Cooling Unit
- Programmable 5/1/1 day heat/cool Thermostat
- AC/DC Smoke Detector
- Combo Co/Smoke Detector
- Exterior GFCI
- Wire Ventilated Overhead Shelf In Each Closet

The Orchards



Includes all The Standard Features With These Added Features

Exterior/Structure

- 8'0" Ceiling Height with 5/12 Cathedral Ceiling or 9' Flat Ceiling Height
- Double Vinyl Patio Door W/Grids, Vert Blind, Valance
- Low-E Thermopane Double Hung Windows with Grids
- Trapezoid Windows above Patio Doors at the 8'0"/Cathedral Ceiling and Transoms above Doors at the 9' Flat Ceiling
- Transom above Living Dining Room Windows

Dining Room

- 5 Arm Chandelier

Kitchen

- 42" Overhead Cabinets W/2 Adjustable Shelves - Choice of Georgetown Oak Mission Flat Panel/Georgetown Oak Raised Panel/Vermont Maple Mission Flat Panel/Driftwood Mission Flat Panel/Hickory Raised Panel/White MDF Flat Panel

Bathrooms

- 2 Full Baths + 3rd Bath with Shower/Shower Door
- Traditional Style Upgraded Deluxe Wood Vanity Cabinets - Choice of Georgetown Oak Mission Flat Panel/Georgetown Oak Raised Panel/Vermont Maple Mission Flat Panel/Driftwood Mission Flat Panel/Hickory Raised Panel/White MDF Flat Panel
- 3 Lights Strip Above Medicine Chest In All Bathrooms

Trimmings, Finishes, Misc.

- Prepared Gas Line for Fire Place
- TV Jack

The Orchards



Includes all The Standard/Deluxe Features With These Added Features

Exterior/Structure

- Main Entrance Door - 9 Panel W/Lite Fiberglass W/Deadbolt

Living Room and Hall

- 6 LED Spot Lights

Dining Room

- 2 LED Spot Lights

Kitchen

- Granite Or Quartz Countertops W/Full Tiled Backsplash – Available Choices For Granite/Quartz/Tiles
- 2 Gooseneck Pull Out Kitchen Faucet W/Sprayer
- Six 6" LED Lights
- Range Hood - Stainless Steel
- 9" Xenon under Cabinet Lights

Bathrooms

- Granite Or Quartz Countertops – Available Choices For Granite/Quartz
- Wide Spread Faucets
- Laminate Flooring - 16 Choices Available or Tiled Flooring – Available Choices
- 4' Tiled Wall – Available Choices

Laundry Room

- 30" Tall Cabinet, 30" Wide and Wire Ventilated Shelf - Choice of Georgetown Oak Mission Flat Panel/Georgetown Oak Raised Panel/Vermont Maple Mission Flat Panel/Driftwood Mission Flat Panel/Hickory Raised Panel/White MDF Flat Panel

Trimmings, Flooring, Finishes, Misc.

- White 2-Panel Door - Solid Core
- Laminate Flooring - 16 Choices Available - Ebony Oak/Golden Oak/ Royal Slate/Maple Cappuccino/Fuzzy Grey/Golden Walnut/Tiffany/River Rock/Cascada/Urban Safari/Winter Wood/Marquee/Timberwolf/Acacia/Deep Forest/Storm Grey
- Deluxe Door/Window Casing MDF Painted White 3 1/4"
- Deluxe Base Molding MDF Painted White 5 1/4"
- Deluxe Cove Molding MDF Painted White 3 5/8"

The Orchards



Individual Selected Available Options

Exterior/Structure Upgrades

- 8'0" Ceiling Height with 5/12 Cathedral Ceiling or 9' Flat Ceiling Height - 1386/1546 Sq. Ft. Unit
- 8'0" Ceiling Height with 5/12 Cathedral Ceiling or 9' Flat Ceiling Height - 1786 Sq. Ft. Unit
- Trapezoid Windows above Patio Doors by the 8'0"/Cathedral Ceiling and Transoms Above Doors at the 9' Flat Ceiling
- Double Vinyl Patio Door W/Grids, Vert Blind, Valance & 3 Way Switch
- Low-E Thermopane Double Hung Windows with Grids - 1386/1546 Sq. Ft. Unit
- Low-E Thermopane Double Hung Windows with Grids - 1786 Sq. Ft. Unit
- Transom above Living/Dining Room Windows - 1386/1546 Sq. Ft. Unit
- Transom above Living/Dining Room Windows - 1786 Sq. Ft. Unit

Dining Room Upgrades

- 5 Arm Chandeliers

Kitchen Upgrades

- 42" Overhead Cabinets W/2 Adjustable Shelves - Choice Of Georgetown Oak Mission Flat Panel/Georgetown Oak Raised Panel/Vermont Maple Mission Flat Panel/Driftwood Mission Flat Panel/Hickory Raised Panel/White MDF Flat Panel

Bathroom Upgrades

- 3rd Bath With Shower - Only Available by the 1786 Sq. Ft. Unit.
 - Traditional Style Upgraded Deluxe Wood Vanity Cabinets - 1386/1546 Sq. Ft. Unit
 - Traditional Style Upgraded Deluxe Wood Vanity Cabinets - 1786 Sq. Ft. Unit
- Choice Of Georgetown Oak Mission Flat Panel/Georgetown Oak Raised Panel/Vermont Maple Mission Flat Panel/Driftwood Mission Flat Panel/Hickory Raised Panel/White MDF Flat Panel
- 3 Lights Strip Above Medicine Chest

Trimnings, Finishes, Misc. Upgrades

- Prepared Gas Line for Fire Place
- TV Jack

All Upgrades Above Are Included In The Deluxe Package

All renderings are for illustrative purposes only and are subject to change. *This is not an offer for sale, which can only be done by prospectus*.



Individual Selected Available Options

Exterior/Structure Upgrades

- Main Entrance Door - 9 Panel W/Lite Fiberglass W/Deadbolt

Living Room & Dining Room Upgrade

- 8 LED Spot Lights 6 in Living Room & 2 In Dining Room

Kitchen Upgrades

- Granite Or Quartz Countertops
- 2 Gooseneck Pull Out Kitchen Faucet W/Sprayer
- Full Tiled Backsplash
- Six 6" LED Lights
- Range Hood - Stainless Steel
- 9" Xenon under Cabinet Lights

Bathroom Upgrades

- Granite Or Quartz Countertops 1386/1546 Sq. Ft. Unit
- Granite Or Quartz Countertops 1786 Sq. Ft. Unit – 3 Bath Unit
- Wide Spread Faucet (Per Bathroom)
- Tiled Bathroom Floor - Per Bathroom
- 4' Tiled Wall – Per Bathroom

Laundry Room Upgrade

- 30" Tall Cabinet, 30" Wide and Wire Ventilated Shelf - Choice of Georgetown Oak Mission Flat Panel/Georgetown Oak Raised Panel/Vermont Maple Mission Flat Panel/Driftwood Mission Flat Panel/Hickory Raised Panel/White MDF Flat Panel

Flooring, Trimmings, Finishes, Misc. Upgrades

- Laminate Flooring - 16 Choice Available
- White 2-Panel Door - Solid Core – Per Door
- Deluxe MDF Painted White Casing , Door/Window 3 1/4" / Base 5 1/4" - 1386/1546 Sq. Ft. Unit
- Deluxe MDF Painted White Casing , Door/Window 3 1/4" / Base 5 1/4" - 1786 Sq. Ft. Unit
- Deluxe Cove Molding MDF Painted White 3 5/8"

All Upgrades Above Are Included In The Premium Package



Other Upgrades Available

- Wood Fire Place
- Gas Insert Vented Fire Place IPO Wood – Additional
- Raised Stone Fireplace Hearth - Additional
- Oak Stairs IPO Pine (Pine Included)
- Individual LED Spot Light
- 80 Gal Electric Water Heater W/Drip Pan
- Door Intercom With 2 Inside Stations. (No Buzzer)
- Covered Porch 8' (Full Width Of House)
- Half Covered Porch 8' (Half Width Of House/13'4" Wide)
- Covered Porch 12' (Full Width Of House)
- Half Covered Porch 12' (Half Width Of House/13'4" Wide)
- Deck
- Deck Steps
- 9' Foundation Ceiling Height
- Laundry Preparation In Basement
- Exterior Door And Stairs To Basement – Where Foundation Is In Ground
- Exterior Door To Basement – Where Foundation Is Exposed





Homes in “The Orchards” are competitively priced:

The Standard

\$244,999 (1,386 square feet) Approximate R.E. Taxes \$3,200

\$284,999 (1,546 square feet) Approximate R.E. Taxes \$3,300

\$312,499 (1,786 square feet) Approximate R.E. Taxes \$3,700

The Deluxe

\$254,999 (1,386 square feet) Similar to above

\$294,999 (1,546 square feet) Similar to above

\$327,499 (1,786 square feet) Similar to above

The Premium

\$274,999 (1,386 square feet) Similar to above

\$314,999 (1,546 square feet) Similar to above

\$342,999 (1,786 square feet) Similar to above

Deposits

\$60,000 due at contract signing

\$60,000 due before foundation installation

\$60,000 due before delivery of the house

Please note: The final 40 units, will be charged at \$7,500/\$15,000/\$22,500 over the aforementioned prices.



Units Size By Color Legend

- 1386 Sq. Ft.
- 1546 Sq. Ft.
- 1786 Sq. Ft.

All renderings are for illustrative purposes only and are subject to change.

Circle A - 12 Units

7 Units = 1386 Sq. Ft.
3 Units = 1546 Sq. Ft.
2 Units = 1786 Sq. Ft.

A1 - 1546
A2 - 1546
A3 - 1546
A4 - 1386
A5 - 1386
A6 - 1386
A7 - 1386
A8 - 1386
A9 - 1386
A10 - 1386
A11 - 1786
A12 - 1786

Circle B - 31 Units

11 Units = 1546 Sq. Ft.
20 Units = 1786 Sq. Ft.

B13 - 1546	B25 - 1546	B37 - 1786
B14 - 1786	B26 - 1546	B38 - 1786
B15 - 1786	B27 - 1546	B39 - 1786
B16 - 1786	B28 - 1546	B40 - 1786
B17 - 1786	B29 - 1546	B41 - 1786
B18 - 1786	B30 - 1546	B42 - 1786
B19 - 1786	B31 - 1546	B43 - 1546
B20 - 1786	B32 - 1546	
B21 - 1786	B33 - 1546	
B22 - 1786	B34 - 1786	
B23 - 1786	B35 - 1786	
B24 - 1786	B36 - 1786	

Circle C - 17 Units

3 Units = 1386
3 Units = 1546 Sq. Ft.
11 Units = 1786 Sq. Ft.

C44 - 1546	C56 - 1786
C45 - 1546	C57 - 1786
C46 - 1386	C58 - 1386
C47 - 1786	C59 - 1546
C48 - 1786	C60 - 1386
C49 - 1786	
C50 - 1786	
C51 - 1786	
C52 - 1786	
C53 - 1786	
C54 - 1786	
C55 - 1786	

Circle D - 23 Units

2 Units = 1386 Sq. Ft.
18 Units = 1546 Sq. Ft.
3 Units = 1786 Sq. Ft.

D61 - 1786	D73 - 1546
D62 - 1546	D74 - 1546
D63 - 1546	D75 - 1546
D64 - 1546	D76 - 1546
D65 - 1546	D77 - 1546
D66 - 1546	D78 - 1546
D67 - 1546	D79 - 1546
D68 - 1546	D80 - 1786
D69 - 1546	D81 - 1786
D70 - 1386	D82 - 1546
D71 - 1386	D83 - 1546
D72 - 1546	

Totals

1386 Sq. Ft. = 12
1546 Sq. Ft. = 35
1786 Sq. Ft. = 36

83 Units